

Specifications



General parameters

Dimensions (W x H x D)	287*232*98mm
weight	3.9kg (including one battery)
Screen size	10.1 inches
Touchscreen Technology	capacitance
Operating temperature	-15°C -45°C
Storage temperature	-25°C -60°C
USB 3.0	2
Network connection	Wireless/Gigabit Ethernet port
Encoder interface	2-axis
Display resolution	1280*800

General UT channel parameters

Number of regular UT channels	Supports conventional UT and TOFD modes
Number of TOFD groups supported	1 group
Excitation voltage	300V
Voltage adjustment step	1V
Excitation voltage mode	Negative square wave
Pulse Width	20ns to 1250ns
Pulse width modulation step	1ns
Pulse repetition frequency	10 KHz
bandwidth	0.4 MHz to 18 MHz
Maximum Gain	120 dB
Gain adjustment step	0.1dB

PA Configuration

Number of groups	1
PA Channel	16: 64 PR/16: 128 PR
Focal Law Number	256
Excitation voltage	100V
Voltage adjustment step	1V
Excitation voltage mode	Negative square wave
Pulse Width	20ns to 1200ns
Pulse width modulation step	1ns
Pulse repetition frequency	20 KHz
bandwidth	0.4 MHz to 18 MHz
Maximum Gain	120 dB
Gain adjustment step	0.1dB
Scanning Mode	A-scan, S-scan, Line scan
Displaying images	S-scan, E-scan, C-scan, D-scan, TOFD
Digital frequency	100MHz
Detection mode	Full wave, positive half wave, negative half wave, RF
Number of data bits	16

Software Features

Maximum supported value	800%
Wireless remote control	Support wireless remote control to adjust the instrument
TOFD Function	Support TOFD acquisition, calibration, and analysis functions
ACG/TCG	ACG and TCG are recorded simultaneously
Independent ACG/TCG	ACG and TCG independent records
Focus Mode	Depth, path, level
Instrument self-check	Support one-key testing of instruments
Custom time-lapse focus law	Support custom time-lapse focusing rules
Interface wave tracking	Support I-gate interface wave tracking
Sound velocity measurement	Ability to measure material functionality
Wedge Calibration	Supports wedge delay calibration
Offline analysis function	Support offline analysis of test data
Customizing View Layout	Support custom view layout

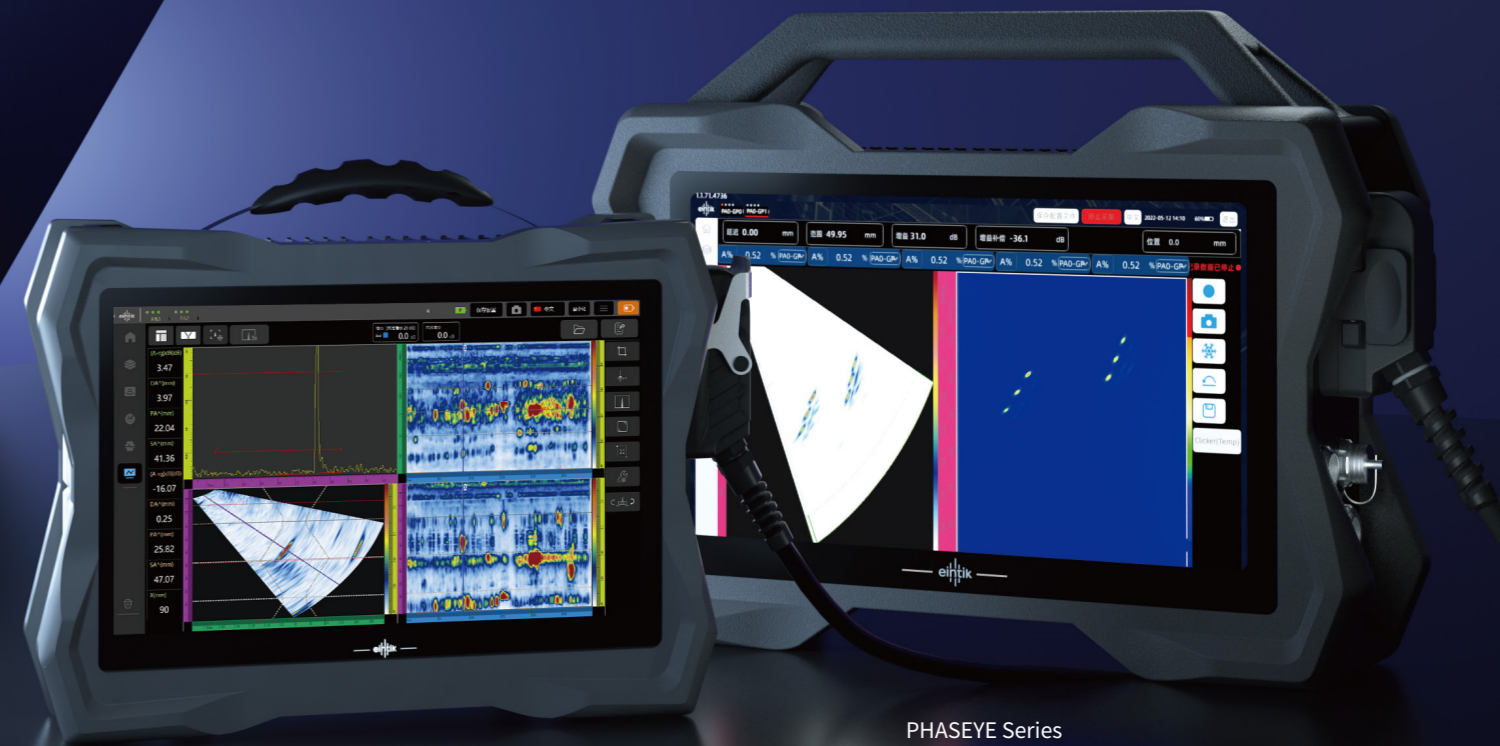
1. Standard kit

PHASEYE® phased array instrument, power cord and printed Getting Started Instructions. The package also includes the latest version of PHASESOFT software, hard carrying case, calibration certificate, lithium-ion battery, anti-glare screen protector, DC charger with power cord, software and user.USB drive with manual and analysis software.

PHASEYE S

Ultrasonic Phased Array Flaw Detector

Portable, lightweight and compact



PHASEYE S Series

PHASEYE Series

More suitable for on-site detection applications



Eintik Technologies(Shanghai) Co.,Ltd

Phone: +86 400 022 6762
sales: sales@eintik.com
Web: www.eintik.com
Address: 3F & 4F, No.12 Building ,Lane 66 Hengyu Road,
Jiading District, Shanghai, China

Products have been certified by ISO 9001 Quality Management System, ISO 14001 Environmental Management System, and ISO 45001 Occupational Health and Safety Management System. The information in this document was accurate at the time of its publication, and actual products may differ from those described herein. PHASEYE® and its associated logos are trademarks registered in China. All technical specifications are subject to change without notice.



PHASEYE S

New generation of high performance ultrasonic phased array flaw detector

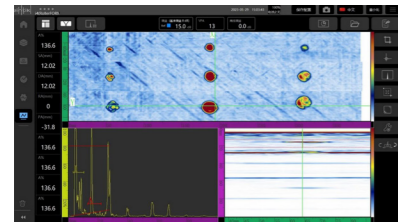
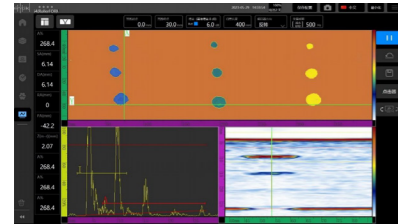


Phaseye S continues the design style of Phaseye, with simple and convenient operation. The instrument settings can achieve the effect of wizard-style operation mode, and can flexibly and quickly set relevant parameters according to needs. Phaseye S is light and compact. The instrument size is small but the display size is kept as large as possible. Phaseye S has powerful hardware performance and powerful phased array functions. Phaseye S supports A-scan, sector scan and line scan modes, and also supports single beam C-scan display and fused C-scan display, support single beam D-scan and fused D-scan display, support TOFD, Scanning mode can display TOFD and phased array inspection images simultaneously.

Phaseye S has 16 independent channels and supports up to 64 chip probes, which can meet the basic, Phased array detection application requirements are particularly suitable for field detection application environments that require high portability.

Instrument Highlights

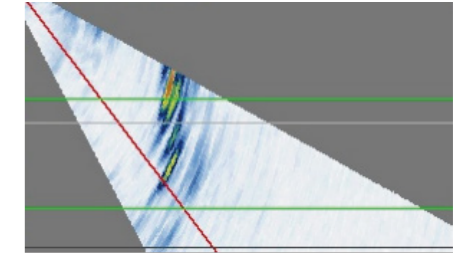
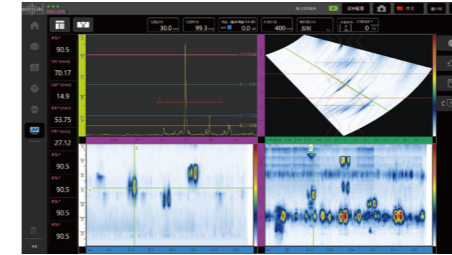
- ✔ Supports a maximum amplitude of 800%, ensuring that the signal does not overflow under high-sensitivity detection requirements;
- ✔ Powerful ACG/TCG function, supports manual TCG, independent ACG/TCG recording, and simultaneous ACG/TCG recording;
- ✔ The instrument realizes self-checking and can test the status of the probe and instrument in real time
- ✔ Powerful interface wave tracking function, TCG position is adjusted dynamically in real time according to the interface wave
- ✔ Support remote control to meet the requirements of flexible on-site control
- ✔ Flexible custom view layout, customize the best view mode according to the detection application requirements



PHASEYE S

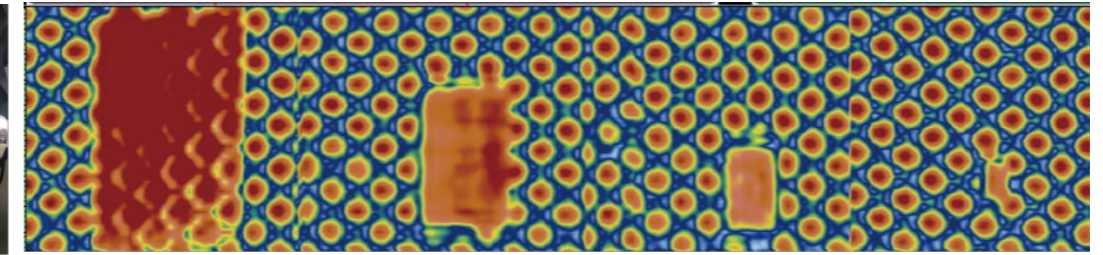
Application Scenarios

Weld inspection



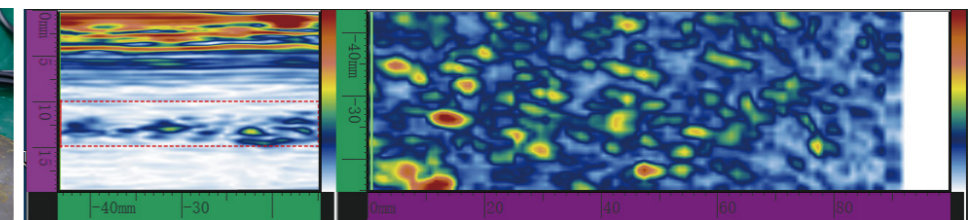
Phaseye S is particularly suitable for on-site weld inspection, with flexible view layout settings, support for single beam C-scan, fused C-scan display, and support for single beam D-scanning and fusion 3D scanning display, all-round display of defect information, marking defects to automatically obtain defect equivalent value, length, height and other defect information.

Composite material testing



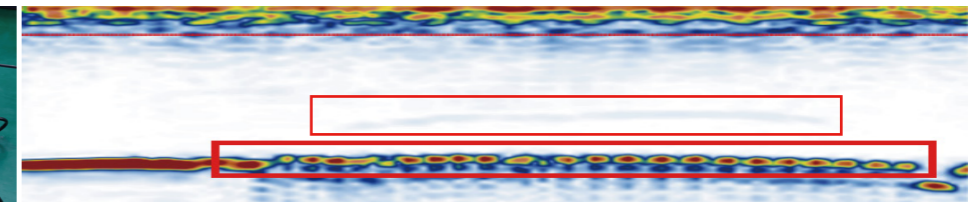
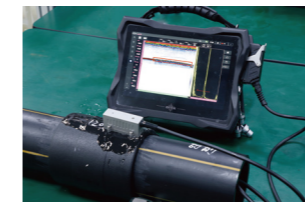
Phaseye S and roller probe are cost-effective solutions for composite material testing. The roller probe is easy to operate, and Phaseye S is portable and compact, especially suitable for on-site in-service maintenance composite material inspection can detect various types of composite materials and also has a good inspection effect on honeycomb composite materials.

Corrosion Detection



Phaseye S is very suitable for corrosion detection of in-service containers and pipelines with corrosion detection probes. It can obtain internal corrosion profile information and obtain the minimum residual. The residual wall thickness value can accurately evaluate the remaining service life of containers and pipelines, and the corrosion distribution map of the entire scan area can be obtained through the C-scan map.

PE pipe electric fusion welding detection



Phaseye S is used with PE pipe electric fusion welding detection probe, which is suitable for on-site detection of PE pipe welding. It is portable and convenient, and can clearly display the signals of each resistance wire. The resistance wire signal determines the welding quality, and the characteristic line signal image determines the penetration depth.



Composite material (carbon fiber) testing



Weld inspection



Wind turbine blade and glass fiber inspection



Plane detection



Aluminum plate and aluminum honeycomb inspection



Gear detection



HDPE pipe electric fusion welding workpiece inspection



Aircraft skin bonding inspection